

INDIA'S No. 1

Fastest Growing

Laser Machine Manufacturer

**WANT LASER ???
ONLY DOLPHIN**



 **DOLPHIN[®]**
LASER MACHINE PVT.LTD



Journey of Dolphin 2016 to Still

- Dolphin laser born in 14, January, 2016.
- Keeping the future in mind we went ahead with the goal of our honourable Prime Minister Shri Narendra Modi ji **"Make in India"** and with the aim of providing easy employment to more and more team, we set up a huge **Manufacturing Unit of 50,000 sq. ft.** at Indore Highway, Ahmedabad, Gujarat.

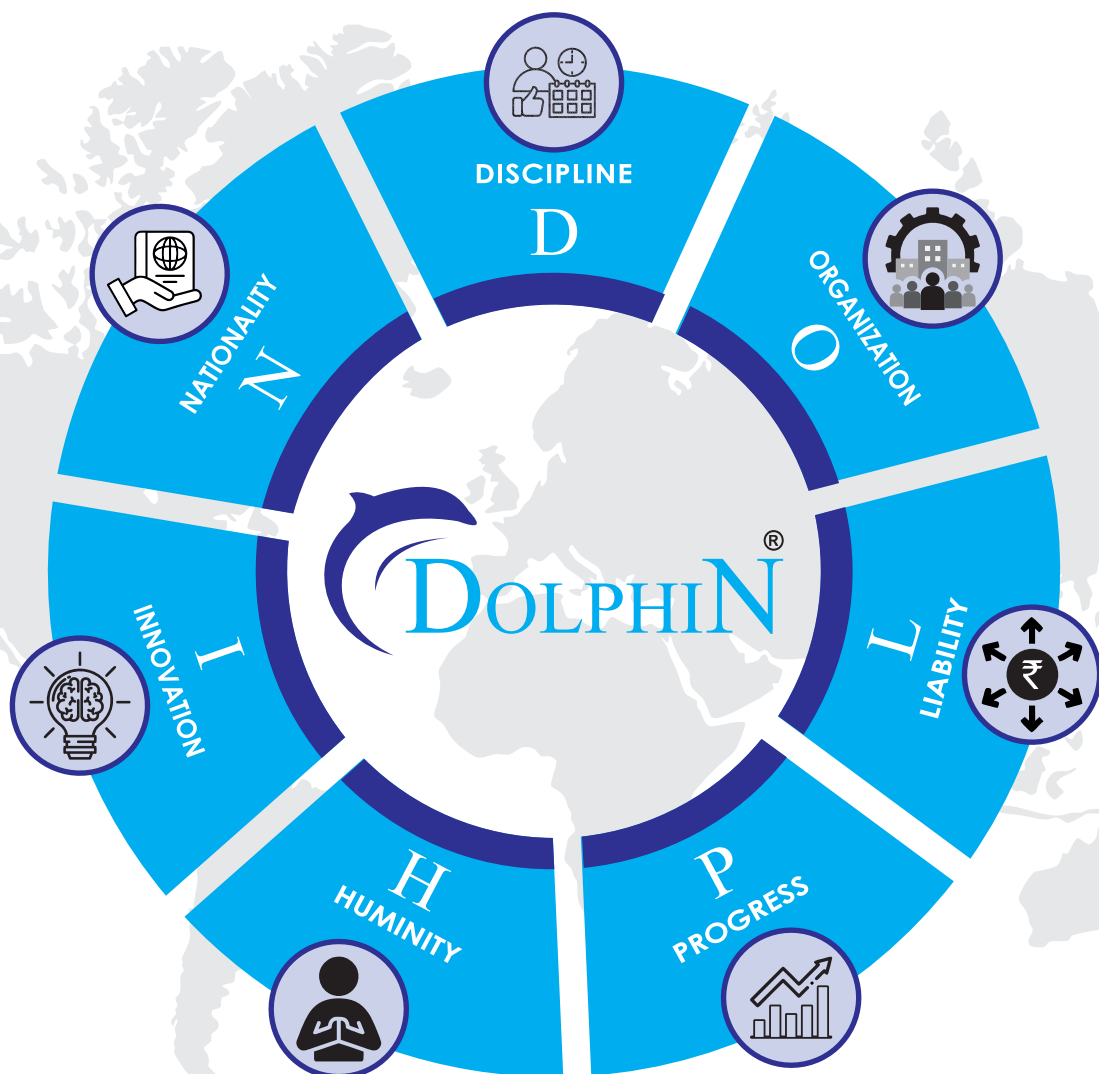
"Due To Expert in Laser Industries, I have started revolutionary laser machine manufacturing company. Our Clients are able to operate Their Business Tension Free because of our excellent innovative laser Machineries. With my knowledge & passion, I am guiding 10,000+ Business owners to grow their business. I love to have you as our dolphin family."

Viral Antala Founder & CEO





Core Value



FIBER LASER MARKING
MACHINE Series...



VECTOR DESIGN

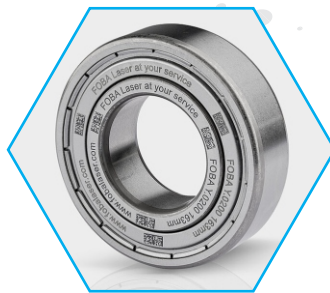
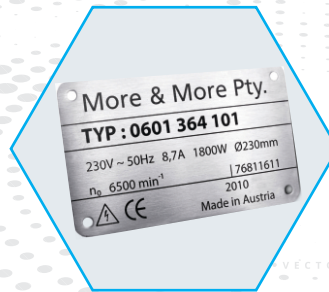
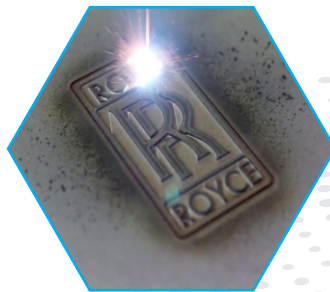


WHICH MATERIALS YOU CAN MARK !!

SS, MS , ALUMINIUM , CAST IRON, PLASTIC,
GOLD , SILVER,PLATINUM, COATED GLASS, BRONZE,
TITANIUM, COPPER, BRASS & More...

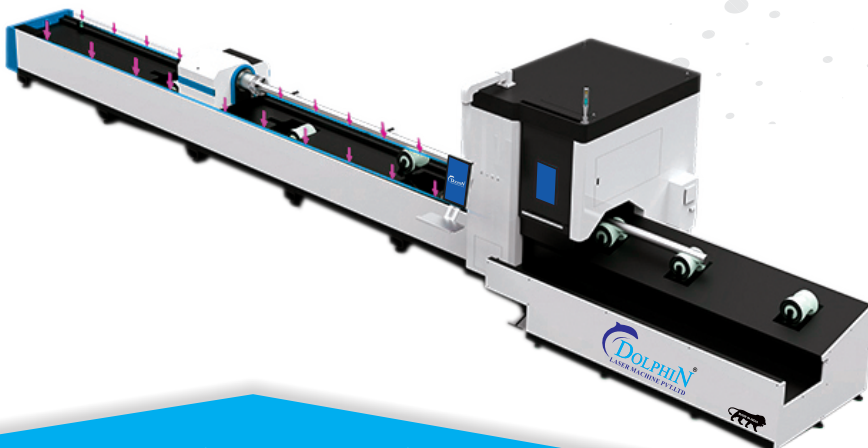
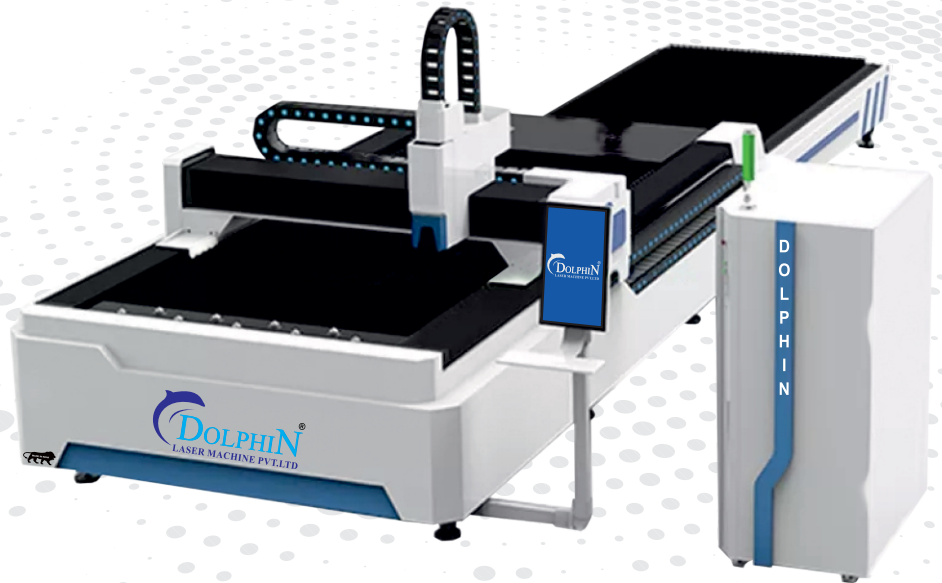
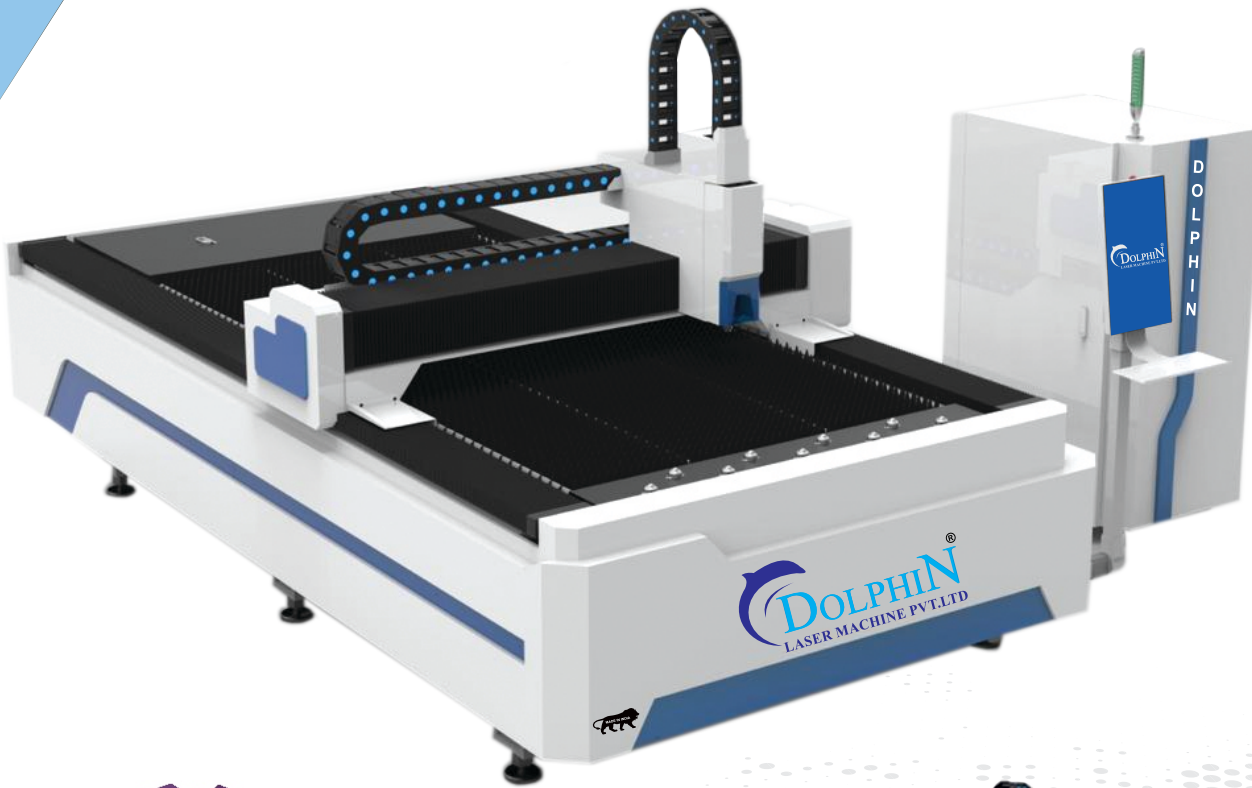
SPECIFICATION

Working Area	100x100, 175x175, 250x250, 300x300 MM & Customized
Laser Type	Fiber Laser
Laser Power	20, 30, 50, 60, 100 W
Operating System	Win 7/8/10/11
Supported File	PLT, DXF, BMP, JPG, GLF, PNG.
Working Volt	Single Phase 220-230V/50HZ (Earthing Req)



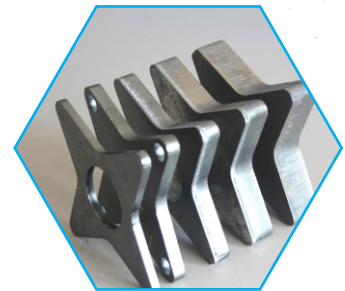
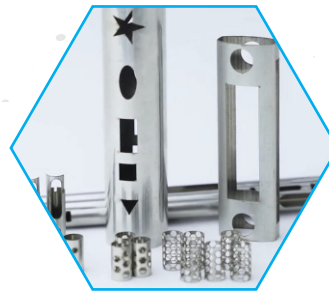
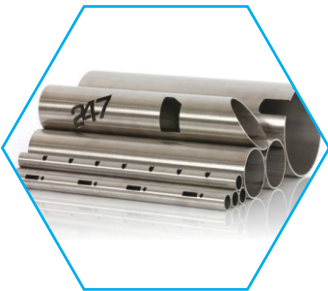
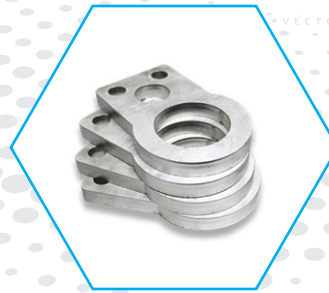
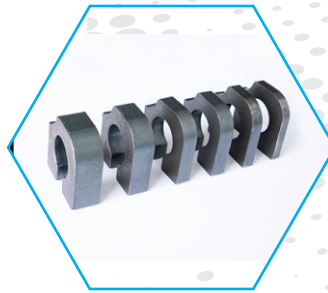
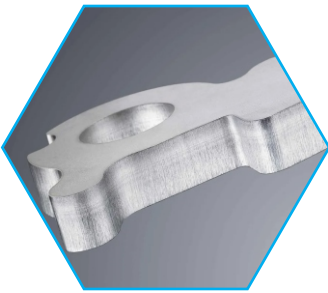
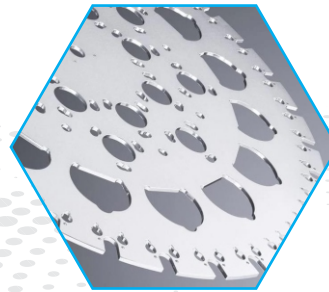
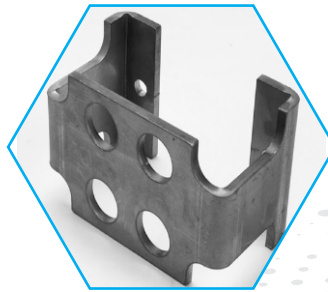
FIBER LASER CUTTING
MACHINE Series

DOLPHIN[®]
LASER MACHINE PVT.LTD



SPECIFICATION

Laser Type	Fiber Laser
Working Area	1500x3000, 2000x4000, 2000x6000, 2500x6500 MM & Customized
Laser Power	1000 W (Optional 1500, 2000, 3000, 6000, 12000, 20000 W)
Laser Head	Ray Tools - Autofocus
Servo Motors	Panasonic, Yaskawa
Rack & Pinion	YYC (Taiwan)
Pneumatics Parts	SMC (Japan)
Maximum Travelling Speed	120M/Per Min.



FIBER LASER WELDING MACHINE

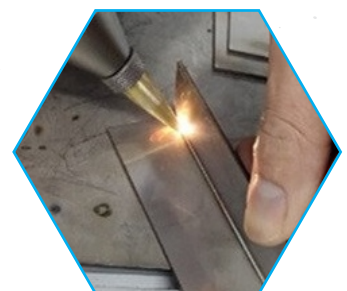
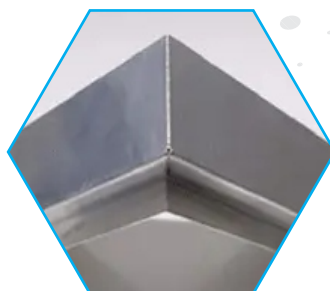


WHICH MATERIALS YOU CAN WELD !!

STAINLESS STEEL, MILD STEEL, ALUMINUM

SPECIFICATION

Laser Power	1000 W (Optional 1500, 2000, 3000 W)
Operational Power	1 Phase (230V-50Hz)
Wobble Weld Width	Up to 5 mm
Wobble Frequency	Up to 300 Hz
Fiber Cable Length	10 Meters
Parameter Presets	100 +
Cooling Style	Water Cooling



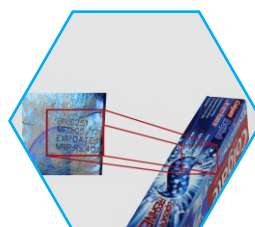
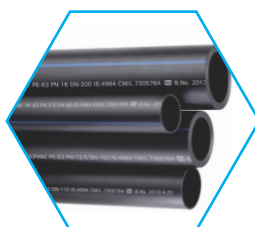


Applications

- PVC PIPE, UPVC PIPE, HDPE PIPE
- AGRO PIPE, IRRIGATION PIPE
- PVC GARDEN PIPE
- DRIP IRRIGATION PIPE
- LDPE IRRIGATION PIPE
- AGRICULTURAL PIPE
- WIRE, PETBOTTLE, FMCG...

SPECIFICATION

Laser Type	Fiber Laser, Co2 Laser, UV Laser
Laser Power	30 W (Optional 50, 100 W) / 30 W (Optional 60W) / 3 W (Optional 5/7 W)
Supported File	PLT, DXF, JPG, PNG
Marking Speed	1 to 200 Min / Meter
Working Volt	Single Phase 220-230V/50HZ (Earthing Req)



Co2 Laser Cutting & Engraving Machine



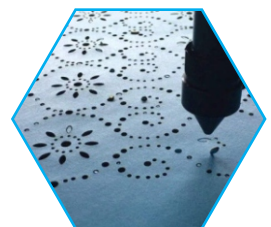
Applications

- Acrylic Cutting
- MDF Cutting
- Gift Artical
- Leather Cutting
- Stone Engraving
- Fabric Cutting
- Rubber Engraving
- Trophy
- Sign Board



SPECIFICATION

Cutting Area	1300x900, 1300x2500, 900x600 MM & Customized
Laser Tube	80, 100, 130, 150, 200 W
Laser Source	Sealed Glass Co2 Laser Tube
Cooling System	Water Cooling
Working Table	Blade / Honey Comb
Operating System	Win 7/8/10/11
Interface	Udisk, Usb, Ethernet
Supported File	PLT, DXF, BMP, JPG, GLF, PNG.
Working Volt	Single Phase 220-230V/50HZ (Earthing Req)



Co2 Laser Engraving Machine



SPECIFICATION

Model	1.Wood Pecker	2.Catwalk
Engraving Area	150x150, 300x300 MM	450x450, 600x 600 MM
Laser Tube	30, 60 W	80,100 W
Laser Source	Metal Tube With Air Cooled / Glass Tube With Water Cooled	
Power Adjustment	1 To 100%	
Engraving Accuracy	<0.01	
Operting System	Win 7/8/10/11	
Interface	Udisk,Usb,Ethernet	
Supported File	PLT,DXF, BMP, JPG, GLF, PNG.	
Working Volt	Single Phase 220-230V/50HZ (Earthing Req)	
Optional Attachment	Rotary Device / Moving Table	
Dimension (LX W X H)	3 x 2 x 4feet	6 x 2 x 5feet
Weight	125kg	300kg



UV Laser Marking Machine



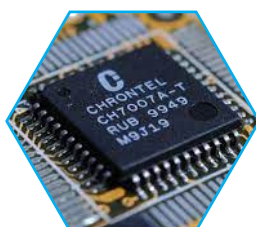
Applications

- Mobile Accessories
- Electronic Components
- Cosmetic Industries
- Sensitive Material
- Glass Engraving
- Crystal Engraving
- PCB Engraving
- Semi Conductor
- Ceramic Engraving
- Paper Board
- Polymer Material
- Coating Film



SPECIFICATION

Working Area	100x100, 175x175, 300x300 MM & Customized
Laser Power	3, 5, 10, 15 W
Supported File	PLT, DXF, JPG, PNG.
Working Volt	Single Phase 220-230V/50HZ (Earthing Req)
Dimension (L X W X H)	3 x 4 x 4 feet
Weight	150kg



Gold Testing Machine



REAL GOLD



FAKE GOLD



FEATURES

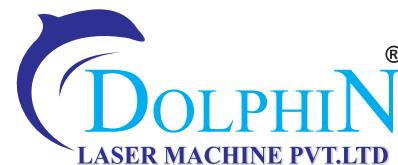
- 99.99% Accuracy
- Result in 30 Sec.
- Result with Image of Jewellery
- Dual Display (Optional)
- Suitable for Bank & Jewellery
- Bill Generation Facility

SPECIFICATION

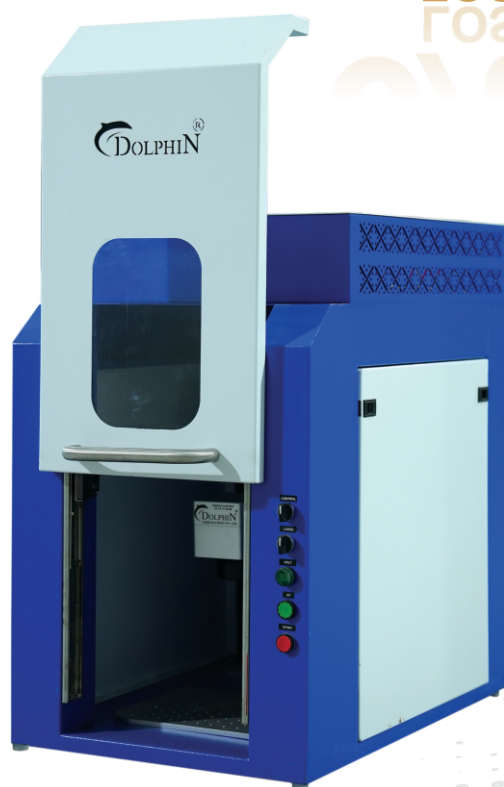
Time	30 Sec
Accuracy	0.30%+/-
Metals	8
Analysis Range	1-99.99
Collimator	2mm
Sample	Solid, Liquid, Powder
Application	Jewellery, Bank



Jewellery Cutting Machine

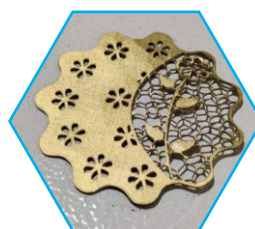
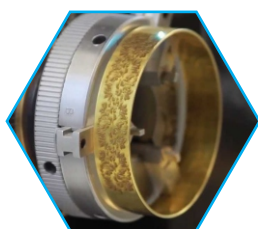


0%
LOSS
TOSS



SPECIFICATION

Laser Type	German Source
Cutting Size	100x100 MM & Customized
Cutting Depth	0.01 Micron - 1.5mm
Optional Attachment	Rotary / Fume Extractor
Working Volt	Single Phase 220-230V/50HZ (Earthing Req)



WANT LASER ???

ONLY DOLPHIN

Jewellery Soldering Machine



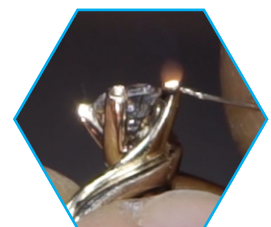
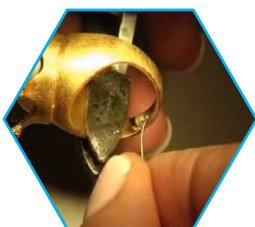
One Stop Solution for Jewellers

- NEW CREATIVE MAKING JEWELLERY
- FASTER PRODUCTION
- SAVES MAN POWER TIME
- NO RISK JEWELLERY DAMAGE



SPECIFICATION

Laser Type	ND Yag Pump Lamp
Laser Power	200 W (100, 400 W)
Solder Joint	0.2 - 2mm
Optional Attachment	CCD
Working Volt	Single Phase 220-230V/50HZ (Earthing Req)
Dimension (LX W X H)	As per Customized



Applications



Automobile



Pump



Valve



Bearing



Engineering



Utensils



Hardware



Pharma



Surgical Instrument



Tool & Toolings



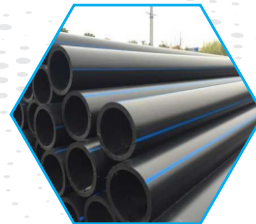
Led



2D & 3D Die



Cable & Wire



Pipe



Cutting Tools



Jewellery & Imitation



Pipe Fittings



Optical



Mobile Accessories



FMCG



Sheet Metal



Elevators



Gift & Article



Advertising



Fabric

Dolphin Family



Introduction



DOLPHIN[®]
LASER MACHINE PVT.LTD

www.dolphinlasmachine.com

18

Wide Range of Machines



Note....

VECTOR DESIGN

Our Network



➤ **3500+**
Installed
World Wide



➤ **150+**
Indian
Government
Installed



➤ **20+**
Exports
Countries



DOLPHIN[®]
LASER MACHINE PVT.LTD

📍 **Head Office :**
Plot No. 23-28, Akshar Estate,
B/h. Madhuban Estate, Bhavda Patiya,
Indore Highway, Ahmedabd,
Gujarat - 382433.



Scan & Visit Website



You Tube

📞 +91 99 98 14 26 09 🌐 www.dolphinlasermachine.com
📞 +91 95 12 24 26 09 ✉ info@dolphinlasermachine.com